

MPI-110

Global Summary

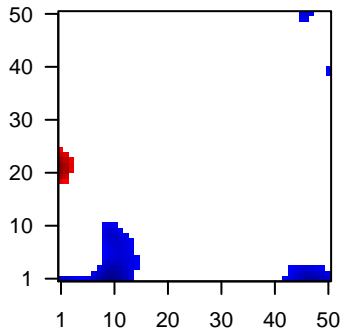
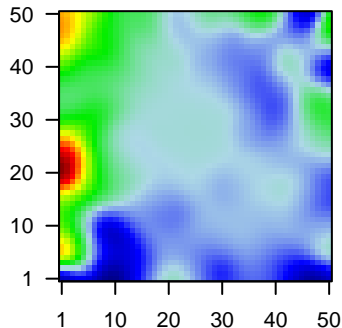
%DE = 0.06
 # genes with fdr < 0.2 = 840 (480 + / 360 -)
 # genes with fdr < 0.1 = 626 (363 + / 263 -)
 # genes with fdr < 0.05 = 477 (275 + / 202 -)
 # genes with fdr < 0.01 = 329 (196 + / 133 -)

genes in genesets = 13152

<FC> = 0
 <t-score> = 0.09
 <p-value> = 0.23
 <fdr> = 0.94

Portrait

Regulated Metagenes



Global Genelist

Rank	ID	log(FC)	fdr	Description		
		p-value		Metagene		
1	AFFX-HUMR	2.04	2e-16	2e-13	49 x 47	
2	AFFX-r2-Hs1	2.25	2e-16	2e-13	49 x 47	
3	AFFX-r2-Hs1	2.16	2e-16	2e-13	49 x 47	
4	200965_s_at	-1.37	2e-16	2e-13	49 x 39	actin binding LIM protein 1 [Source:HGNC Symbol;Acc:HGNC:10000]
5	201008_s_at	-1.51	2e-16	2e-13	0 x 49	thioredoxin interacting protein [Source:HGNC Symbol;Acc:HGNC:10000]
6	202018_s_at	2.11	2e-16	2e-13	11 x 4	lactotransferrin [Source:HGNC Symbol;Acc:HGNC:6720]
7	202214_s_at	-1.43	2e-16	2e-13	49 x 22	cullin 4B [Source:HGNC Symbol;Acc:HGNC:2555]
8	202953_at	-1.34	2e-16	2e-13	0 x 0	complement C1q B chain [Source:HGNC Symbol;Acc:HGNC:10000]
9	203795_s_at	-1.68	2e-16	2e-13	42 x 49	BCL tumor suppressor 7A [Source:HGNC Symbol;Acc:HGNC:10000]
10	207861_at	2.76	2e-16	2e-13	0 x 20	C-C motif chemokine ligand 22 [Source:HGNC Symbol;Acc:HGNC:10000]
11	209138_x_at	0.84	2e-16	2e-13	41 x 42	immunoglobulin lambda constant 2 [Source:HGNC Symbol;Acc:HGNC:10000]
12	209374_s_at	1.05	2e-16	2e-13	0 x 22	immunoglobulin heavy constant mu [Source:HGNC Symbol;Acc:HGNC:10000]
13	209687_at	-1.46	2e-16	2e-13	10 x 8	C-X-C motif chemokine ligand 12 [Source:HGNC Symbol;Acc:HGNC:10000]
14	213502_x_at	1.04	2e-16	2e-13	41 x 42	
15	214669_x_at	-1.84	2e-16	2e-13	0 x 3	
16	214677_x_at	1.02	2e-16	2e-13	41 x 42	immunoglobulin lambda constant 2 [Source:HGNC Symbol;Acc:HGNC:10000]
17	214836_x_at	-1.86	2e-16	2e-13	0 x 3	
18	215176_x_at	-1.32	2e-16	2e-13	10 x 5	immunoglobulin kappa variable 1-39 (gene/pseudogene) [Source:HGNC Symbol;Acc:HGNC:10000]
19	215379_x_at	1.23	2e-16	2e-13	41 x 42	immunoglobulin lambda constant 2 [Source:HGNC Symbol;Acc:HGNC:10000]
20	215946_x_at	1.37	2e-16	2e-13	41 x 42	immunoglobulin lambda like polypeptide 3, pseudogene [Source:HGNC Symbol;Acc:HGNC:10000]

Global Geneset Analysis

Rank	GSZ	p-value	#all	Geneset
<i>Overexpressed</i>				
1	11.99	NULL	3767	Chromatin accessibility peripheral blood_6_EnhG
2	11.59	NULL	5716	Chromatin accessibility peripheral blood_4_Tx
3	11.26	NULL	8406	Chromatin accessibility peripheral blood_2_TssAFlnk
4	10.98	NULL	7833	Chromatin accessibility peripheral blood_1_TssA
5	10.95	NULL	4261	Lymphoid tissue development OPP_Txn_transition
6	10.91	NULL	317	Cancer SPANG_BCL6-index2
7	10.81	NULL	18	Lymphoid tissue development WRIGHT_ABC UP
8	10.69	NULL	7930	Chromatin accessibility regulatory cells peripheral blood_1_TssA
9	10.62	NULL	5527	Chromatin accessibility regulatory cells peripheral blood_4_Tx
10	10.62	NULL	8245	Chromatin accessibility regulatory cells peripheral blood_2_TssAFlnk
11	10.36	NULL	693	Chromatin accessibility peripheral blood_3_TxFlnk
12	10.24	NULL	7957	Chromatin accessibility peripheral blood_2_TssAFlnk
13	10.21	NULL	5529	Lymphoid tissue development OPP_Txn_elongation
14	10.01	NULL	6590	Chromatin accessibility regulatory cells peripheral blood_5_TxWk
15	9.99	NULL	5601	Chromatin accessibility regulatory cells peripheral blood_4_Tx
16	9.98	NULL	85	Lymphoid tissue development DBLCL UP
17	9.76	NULL	5404	Lymphoid tissue development OPP_Strong_enhancer
18	9.74	NULL	7420	Chromatin accessibility peripheral blood_1_TssA
19	9.65	NULL	8200	Chromatin accessibility regulatory cells peripheral blood_2_TssAFlnk
20	9.56	NULL	3524	Chromatin accessibility regulatory cells peripheral blood_6_EnhG
<i>Underexpressed</i>				
1	-9.92	NULL	3001	Chromatin accessibility peripheral blood_14_ReprPCWk
2	-9.89	NULL	2405	Chromatin accessibility peripheral blood_13_ReprPC
3	-9.85	NULL	3168	Lymphoid tissue development OPP_Repressed
4	-9.25	NULL	2747	Chromatin accessibility peripheral blood_12_EnhBiv
5	-9.1	NULL	2602	Chromatin accessibility killer cells peripheral blood_12_EnhBiv
6	-9.02	NULL	102	Reference set of genes for B-cells
7	-8.94	NULL	3734	Chromatin accessibility peripheral blood_13_ReprPC
8	-8.93	NULL	82	Colon Cancer track_CRC_TCGA_group.over_A_normal_UP
9	-8.63	NULL	2515	Chromatin accessibility killer cells peripheral blood_13_ReprPC
10	-8.6	NULL	2765	Chromatin accessibility regulatory cells peripheral blood_13_ReprPC
11	-8.44	NULL	2984	Chromatin accessibility killer cells peripheral blood_14_ReprPCWk
12	-8.4	NULL	1894	Lymphoid tissue development OPP_Poised_promoter
13	-8.38	NULL	73	GSEA C2HECKER_IFNB1_TARGETS
14	-8.37	NULL	2300	Chromatin accessibility killer cells peripheral blood_13_ReprPC
15	-8.28	NULL	3089	Chromatin accessibility regulatory cells peripheral blood_14_ReprPCWk
16	-8.25	NULL	1604	Chromatin accessibility BivFlnk
17	-8.23	NULL	122	GSEA C2TAKEDA_TARGETS_OF_NUP98_HOXA9_FUSION_8D_UP
18	-8.15	NULL	2700	Chromatin accessibility killer cells peripheral blood_14_ReprPCWk
19	-8.08	NULL	3918	Chromatin accessibility peripheral blood_14_ReprPCWk
20	-7.96	NULL	3150	Chromatin accessibility regulatory cells peripheral blood_13_ReprPC

p-values

